

Air Sentry® Breather Adapters for Easy Installation

Flange adapters, used with breathers having a 1" slip-fit connection, are used for reservoirs where the tank wall is not thick enough to allow for tapping threads. With the Model A-101 adapter, mounting holes can be drilled in the high impact ABS molded flange to mate with any required hole pattern. The Model A-114 flange adapter has a standard ANSI 6-hole pattern pre-drilled for mounting.

Threaded adapters, suitable for use with Air Sentry breathers that have a 1" slip fit connection, are intended for reservoirs or gearboxes with a wall thickness sufficient for a tapped hole. Male and female NPT and male BSP thread versions are available.

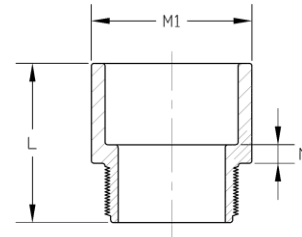
The bayonet adapter replaces a standard breather cap on a hydraulic reservoir. Simply remove the breather cap, place the bayonet adapter on the breather flange, and rotate one-quarter turn. No tank modification is required. Bayonet adapters fit Air Sentry breathers with a 1" slip-fit connection.

Threaded spin-on adapters replace the standard spin-on particle filters made by many manufacturers. These adapters fit Air Sentry breathers with 1" slip-fit connections, are available in different sizes, and thread configurations. No tank modifications are required.

Threaded metal adapters fit the X-100 and any Z series breather. The breather connection is ½" male NPT while a variety of reservoir connection types are available.

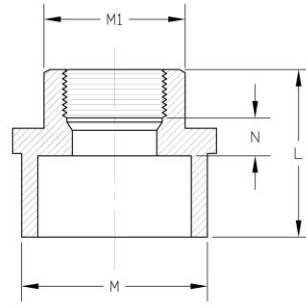
ADAPTER SPECIFICATIONS

Slip Fit – Threaded Adapters (male)



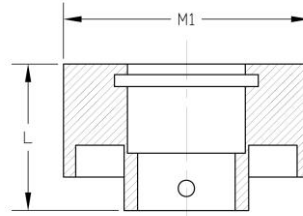
Part #	Material	Connection to Breather	Connection to Reservoir	M1 (inches)	N (inches)	L (inches)
A-102	Schedule 40 PVC	Slip Fit – 1 inch	1 inch male NPT	1 5/8	7/32	2
A-103	Schedule 40 PVC	Slip Fit – 1 inch	¾ inch male NPT	1 21/32	3/16	2
A-409	Schedule 40 PVC	Slip Fit – 1 inch	½ inch male NPT	1 9/16	5/8	2 7/16
A-501	Schedule 40 PVC	Slip Fit – 1 inch	1 inch male BSP	1 5/8	7/32	2 1/8
Fits all breathers with slip fit connections						

Slip Fit – Threaded Adapters (female)



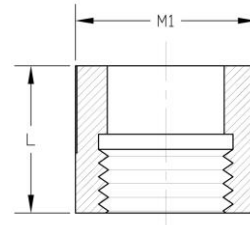
Part #	Material	Connection to Breather	Connection to Reservoir	M (inches)	M1 (inches)	N (inches)	L (inches)
A-410	Schedule 40 PVC	Slip Fit – 1 inch	½ inch female NPT	1 11/16	1 3/16	5/32	2
Fits all breathers with slip fit connections							

Slip Fit Bayonet Adapters



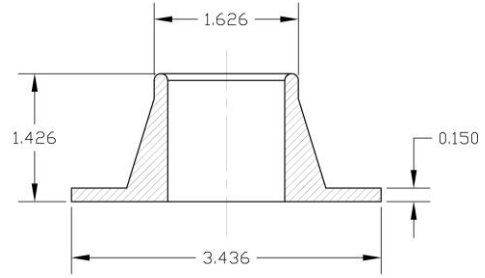
Part #	Material	Connection to Breather	Connection to Reservoir	M1 (inches)	L (inches)
A-104	High Density EDPM, Gasket, Metal Dowel	Slip Fit – 1 inch	Bayonet push & turn connection	2 3/4	1 5/8
Fits all breathers with slip fit connections					

Slip Fit Threaded Spin-On Adapters



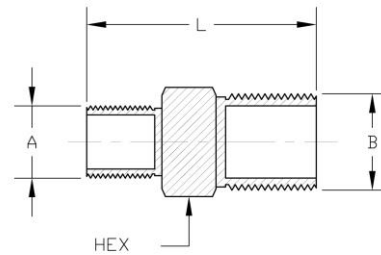
Part #	Material	Connection to Breather	Connection to Reservoir	M1 (inches)	L (inches)
A-105	High Density EDPM	Slip Fit – 1 inch with O-ring seal	1 inch – 12 UNF, 3/4 inch thread length	2	1 5/8
A-106	High Density EDPM	Slip Fit – 1 inch with O-ring seal	1 1/2 inch – 16 UNF, 3/4 inch thread length	1 21/32	2
A-115	Delrin	Slip Fit – 1 inch with O-ring seal	1 1/2 inch – 16 UNF, 3/4 inch thread length	1 9/16	2 7/16
Fits all breathers with slip fit connections					

Slip Fit Flange Adapters



Part #	Material	Connection to Breather	Connection to Reservoir
A-101	High Impact ABS	Slip Fit – 1 inch	Customer drilled holes
A-114	High Impact ABS	Slip Fit – 1 inch	Six $\frac{3}{8}$ inch clearance holes spaced 60 degrees apart on $2\frac{7}{8}$ inch diameter center
Fits all breathers with slip fit connections			

Threaded Metal Adapters



Part #	Material	Connection to Breather (A)	Connection to Reservoir (B)	L (inches)	Hex Size (inches)
A-401	Carbon Steel	$\frac{1}{2}$ inch male NPT	$\frac{1}{4}$ inch male NPT	$1\frac{5}{8}$	$\frac{7}{8}$
A-402	Carbon Steel	$\frac{1}{2}$ inch male NPT	$\frac{1}{4}$ inch female NPT	$1\frac{1}{2}$	$\frac{7}{8}$
A-403	Carbon Steel	$\frac{1}{2}$ inch male NPT	$\frac{3}{8}$ inch male NPT	$1\frac{5}{8}$	$\frac{7}{8}$
A-404	Carbon Steel	$\frac{1}{2}$ inch male NPT	$\frac{3}{8}$ inch female NPT	$1\frac{11}{16}$	$\frac{7}{8}$
A-406	Carbon Steel	$\frac{1}{2}$ inch male NPT	$\frac{3}{4}$ inch male NPT	$1\frac{7}{8}$	$1\frac{1}{16}$
A-407	Carbon Steel	$\frac{1}{2}$ inch male NPT	1 inch female NPT	$1\frac{15}{16}$	$1\frac{3}{8}$
A-408	Carbon Steel	$\frac{1}{2}$ inch male NPT	1 inch male NPT	$2\frac{3}{32}$	$1\frac{1}{16}$
Fits all Z-Series breathers and X-100					